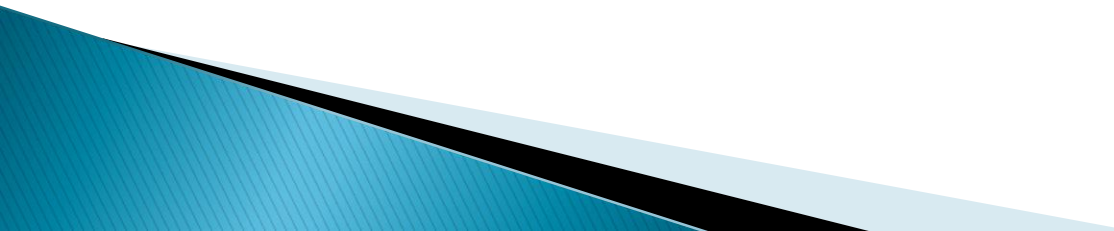


On Working in an Industry Where Mathematicians Are *Rare*

Dr Juliette Woods
Associate & Principal Groundwater Modeller
Australian Water Environments

- ▶ Environmental consulting
 - ▶ How I got there
 - ▶ Speaking geologist
 - ▶ Magical toolkit
 - ▶ Street fighting mathematics
 - ▶ Pleasures and pains
- 





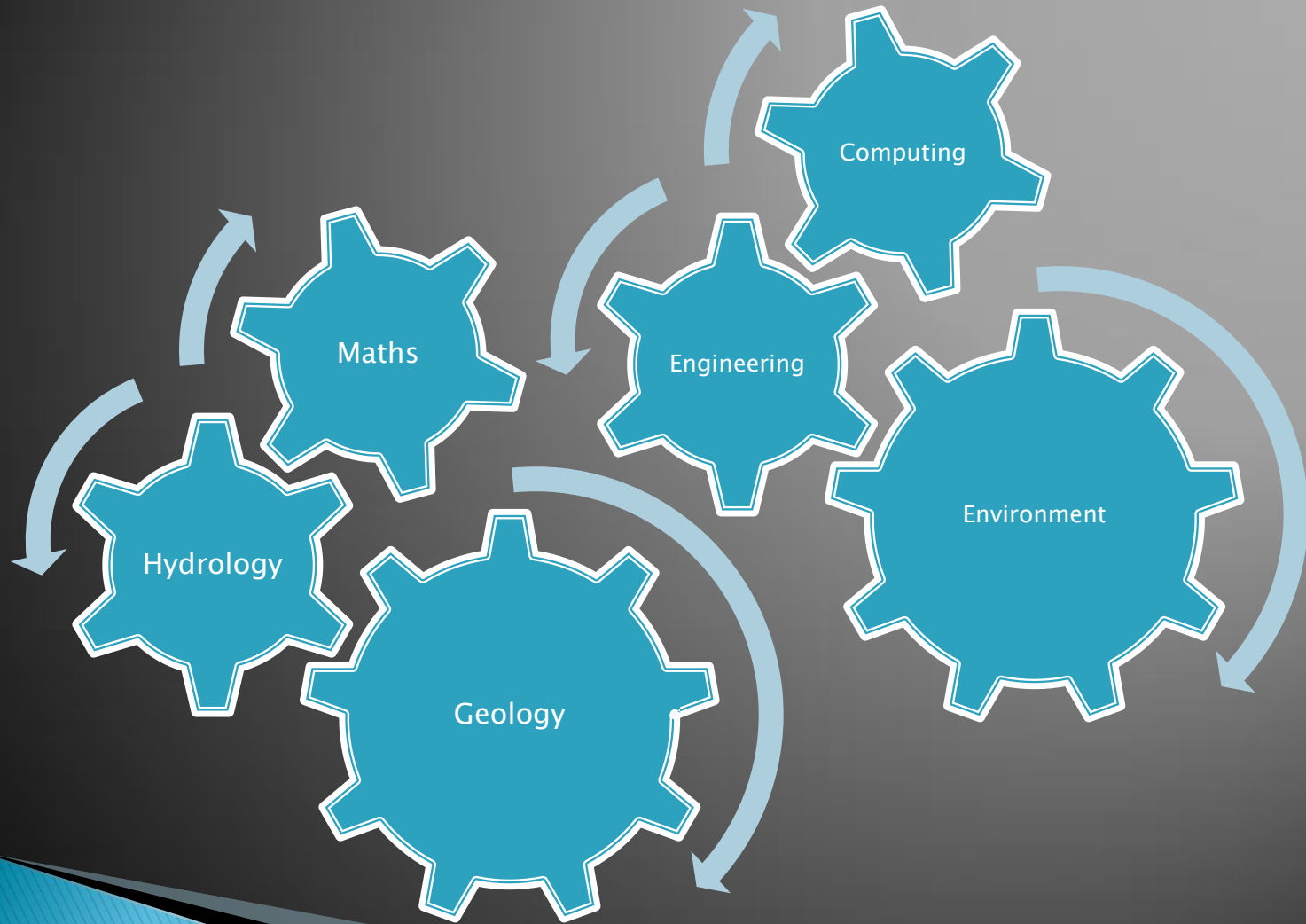
THE UNIVERSITY
OF ADELAIDE
AUSTRALIA

Science
degree

Maths
degree

Honours

Computational hydrogeology



PhD



Government
of South Australia



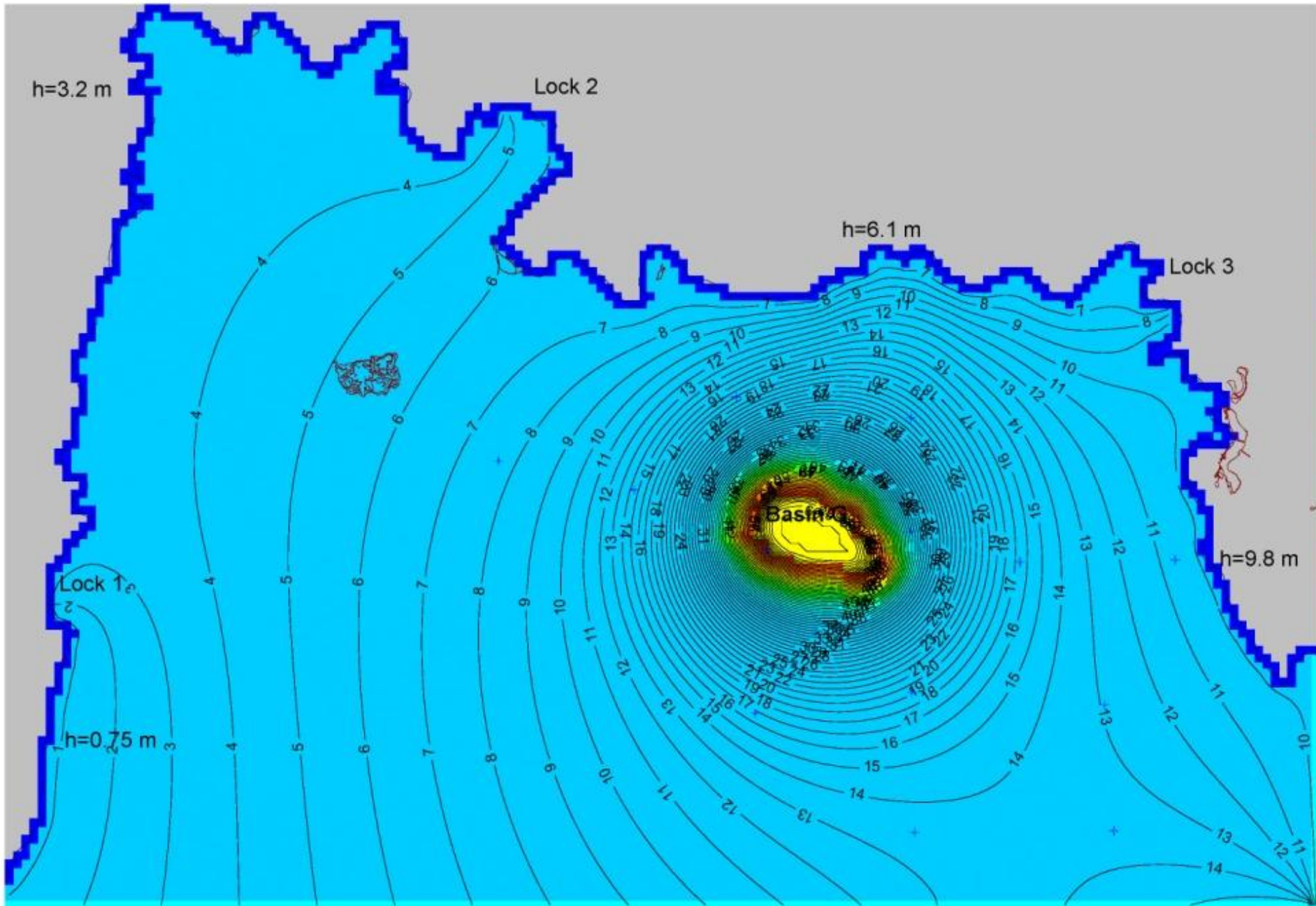
CSIRO

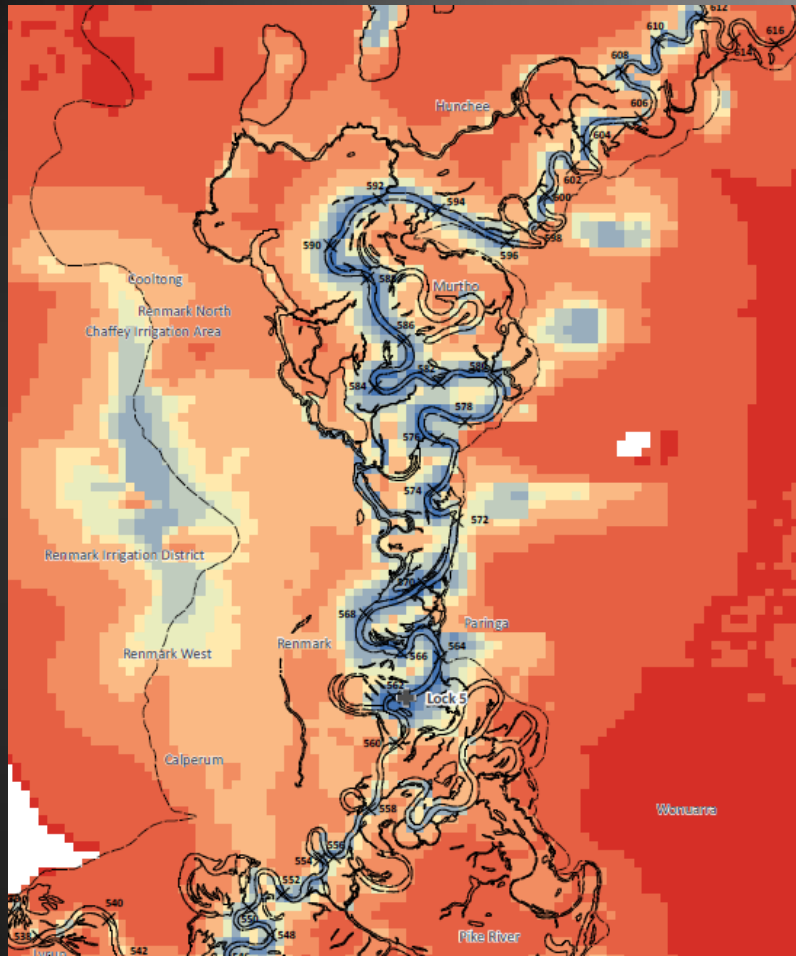


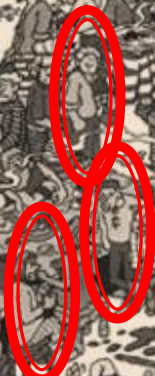
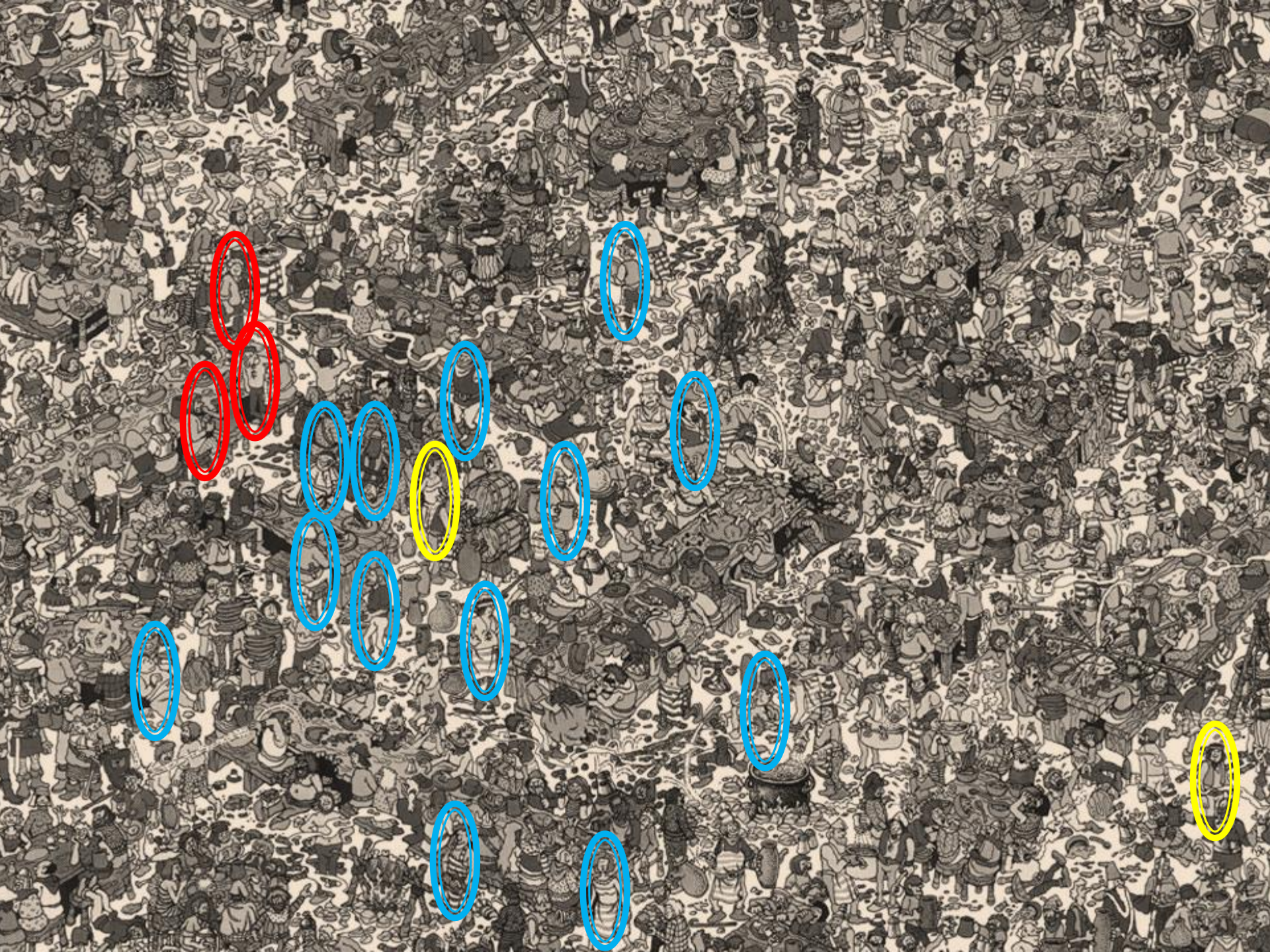
Australian
WATER
Environments



THE UNIVERSITY
OF ADELAIDE
AUSTRALIA







$$\mathbf{v}_\alpha = -\frac{k_{r\alpha}(S_\alpha)}{\mu_\alpha} \mathbf{k}(\nabla p_\alpha - \rho_\alpha \mathbf{g})$$

$$\alpha \in \{o, g, a\}$$

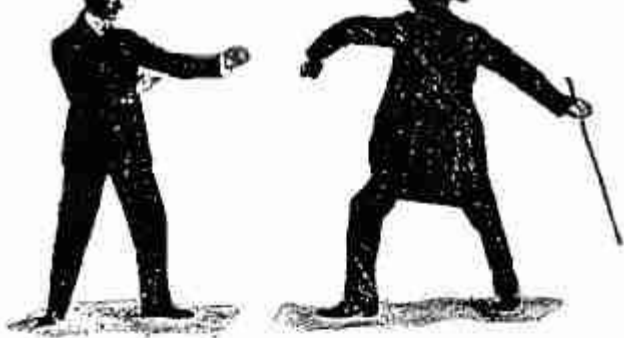






$$v_\alpha = -\frac{k_{ra}(S_\alpha)}{\mu_\alpha} k(\nabla p_\alpha - \rho_\alpha g)$$

$\alpha \in \{0, 8, a\}$



Thank you

